

## HyperSync® Results

### Nikon D3s + White Lightning X3200

HyperSync Only Enabled

Highest Energy

#### **IMAGES BEGIN ON THE NEXT PAGE!**

On the following pages you will find images generated using [HyperSync®](#) with the [Nikon D3s](#) and the [White Lightning X3200](#). To achieve similar results, use the settings detailed below.

**Test Conditions:** These images were captured indoors, with the camera and flash positioned 6 ft (2 m) from a white wall. A standard reflector was used, but the light was otherwise unmodified. Your results may differ depending upon the position of your lights and ambient conditions.

**Transmitter Settings:** These images were generated using FlexTT5 Version 3.400 – results may change with future firmware releases.

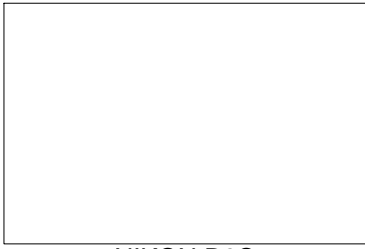
1. Use a [Nikon MiniTT1](#) or [FlexTT5](#) updated to the latest firmware.
2. Enable “[HyperSync Only](#)” under the “[HyperSync/HSS](#)” tab.
3. All other transmitter settings may be left at their defaults.

**Receiver Settings:** These images were generated using FlexTT5 Version 3.400 and an [AC9 AlienBees Adapter](#) – results may change with future firmware releases.

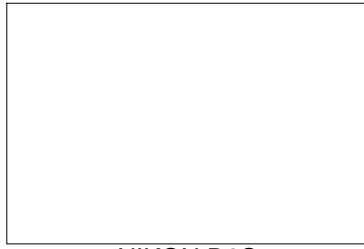
1. Use a Nikon FlexTT5 updated to the latest firmware and a Nikon AC9 AlienBees Adapter.
2. Set the “[AC9 Flash](#)” drop-down to “X3200” under the “[HyperSync/HSS](#)” tab.
3. Set the “[Optimize HyperSync Automation For:](#)” control to “[Highest Energy](#)” under the “[HyperSync/HSS](#)” tab.
4. All other receiver settings may be left at their defaults.

**Camera Settings:** The images in this document were captured using ISO 200 and f/11, at all camera shutter speeds. All other camera settings were factory defaults. Your results may differ depending on your camera settings and exposure.

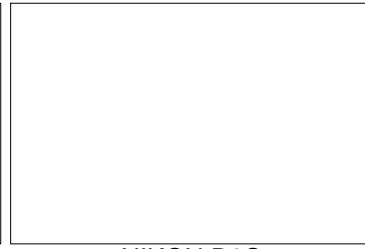
Visit the [HyperSync](#) page on the [PocketWizard Wiki](#) for more information!



NIKON D3S  
1/200 f/11



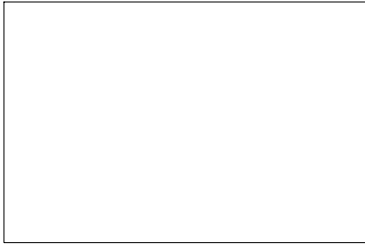
NIKON D3S  
1/250 f/11



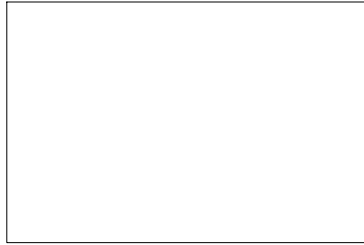
NIKON D3S  
1/320 f/11



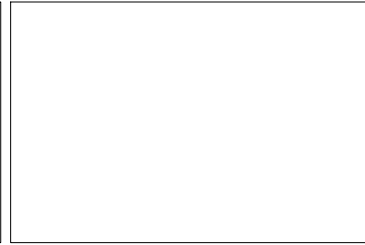
NIKON D3S  
1/400 f/11



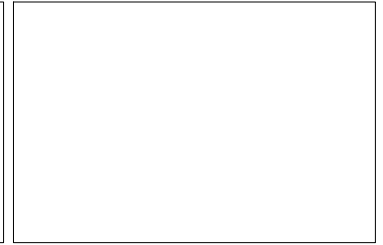
NIKON D3S  
1/500 f/11



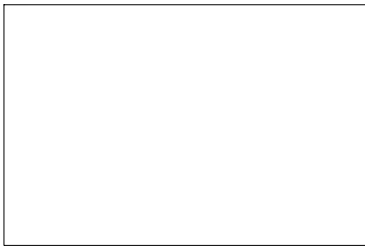
NIKON D3S  
1/640 f/11



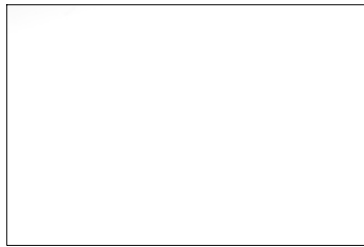
NIKON D3S  
1/800 f/11



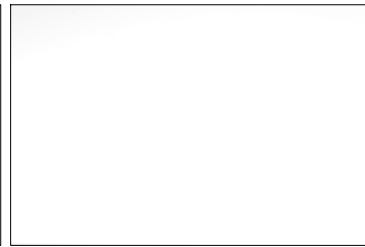
NIKON D3S  
1/1000 f/11



NIKON D3S  
1/1250 f/11



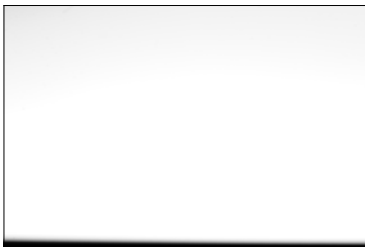
NIKON D3S  
1/1600 f/11



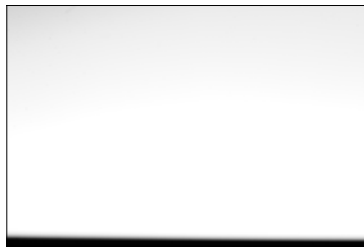
NIKON D3S  
1/2000 f/11



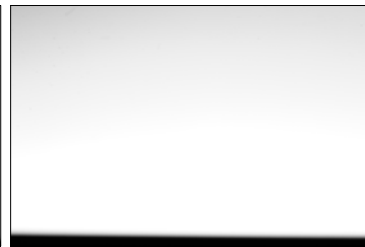
NIKON D3S  
1/2500 f/11



NIKON D3S  
1/3200 f/11



NIKON D3S  
1/4000 f/11



NIKON D3S  
1/5000 f/11



NIKON D3S  
1/6400 f/11



NIKON D3S  
1/8000 f/11

Nikon D3s, White Lightning X3200, +3 (Full Power)  
HyperSync Only Enabled  
Optimize HyperSync Automation For: Highest Energy  
PDF Revision 1.1



NIKON D3S  
1/200 f/11



NIKON D3S  
1/250 f/11



NIKON D3S  
1/320 f/11



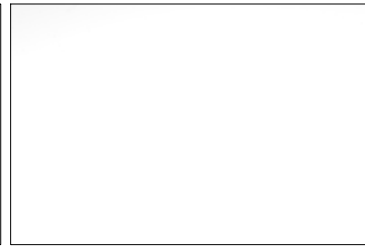
NIKON D3S  
1/400 f/11



NIKON D3S  
1/500 f/11



NIKON D3S  
1/640 f/11



NIKON D3S  
1/800 f/11



NIKON D3S  
1/1000 f/11



NIKON D3S  
1/1250 f/11



NIKON D3S  
1/1600 f/11



NIKON D3S  
1/2000 f/11



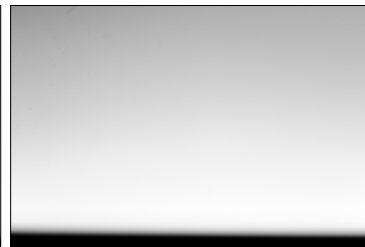
NIKON D3S  
1/2500 f/11



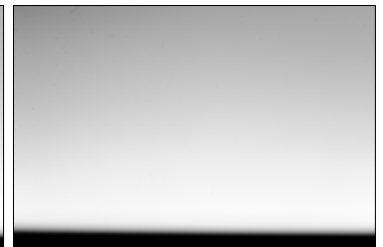
NIKON D3S  
1/3200 f/11



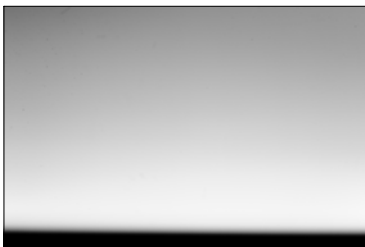
NIKON D3S  
1/4000 f/11



NIKON D3S  
1/5000 f/11



NIKON D3S  
1/6400 f/11



NIKON D3S  
1/8000 f/11

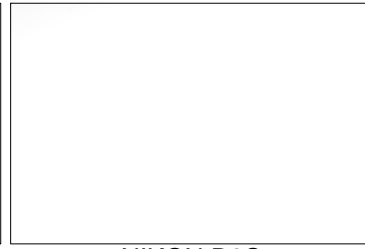
Nikon D3s, White Lightning X3200, +2 (1/2 Power)  
HyperSync Only Enabled  
Optimize HyperSync Automation For: Highest Energy  
PDF Revision 1.1



NIKON D3S  
1/200 f/11



NIKON D3S  
1/250 f/11



NIKON D3S  
1/320 f/11



NIKON D3S  
1/400 f/11



NIKON D3S  
1/500 f/11



NIKON D3S  
1/640 f/11



NIKON D3S  
1/800 f/11



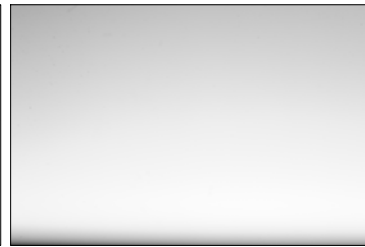
NIKON D3S  
1/1000 f/11



NIKON D3S  
1/1250 f/11



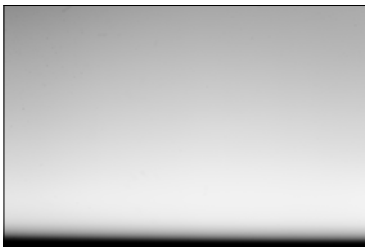
NIKON D3S  
1/1600 f/11



NIKON D3S  
1/2000 f/11



NIKON D3S  
1/2500 f/11



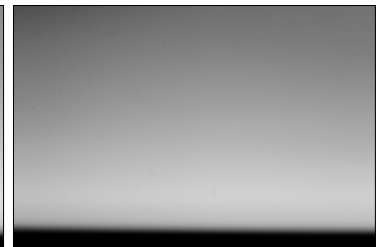
NIKON D3S  
1/3200 f/11



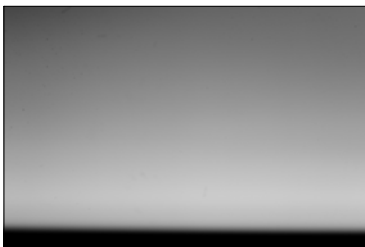
NIKON D3S  
1/4000 f/11



NIKON D3S  
1/5000 f/11



NIKON D3S  
1/6400 f/11



NIKON D3S  
1/8000 f/11

Nikon D3s, White Lightning X3200, +1 (1/4 Power)  
HyperSync Only Enabled  
Optimize HyperSync Automation For: Highest Energy  
PDF Revision 1.1



NIKON D3S  
1/200 f/11



NIKON D3S  
1/250 f/11



NIKON D3S  
1/320 f/11



NIKON D3S  
1/400 f/11



NIKON D3S  
1/500 f/11



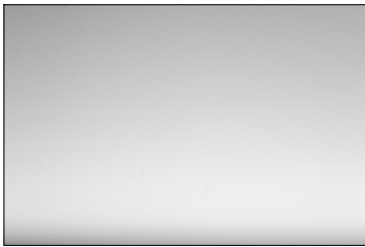
NIKON D3S  
1/640 f/11



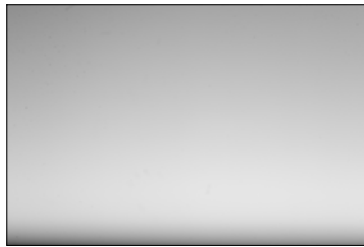
NIKON D3S  
1/800 f/11



NIKON D3S  
1/1000 f/11



NIKON D3S  
1/1250 f/11



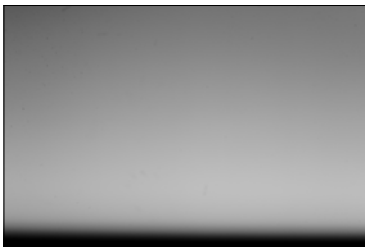
NIKON D3S  
1/1600 f/11



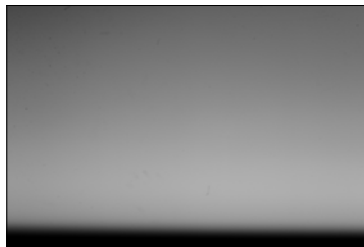
NIKON D3S  
1/2000 f/11



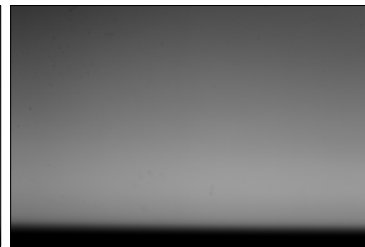
NIKON D3S  
1/2500 f/11



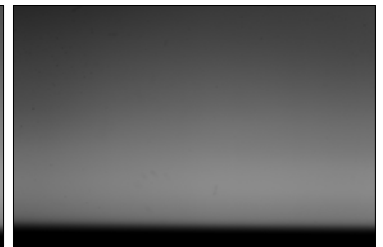
NIKON D3S  
1/3200 f/11



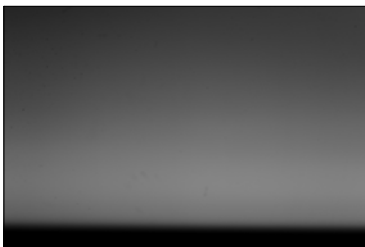
NIKON D3S  
1/4000 f/11



NIKON D3S  
1/5000 f/11



NIKON D3S  
1/6400 f/11



NIKON D3S  
1/8000 f/11

Nikon D3s, White Lightning X3200, +0 (1/8 Power)  
HyperSync Only Enabled  
Optimize HyperSync Automation For: Highest Energy  
PDF Revision 1.1



NIKON D3S  
1/200 f/11



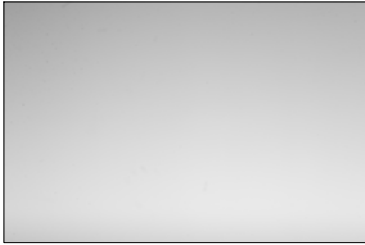
NIKON D3S  
1/250 f/11



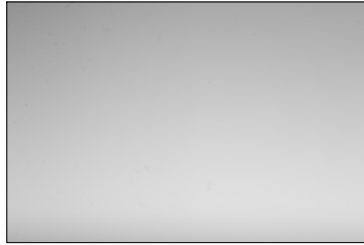
NIKON D3S  
1/320 f/11



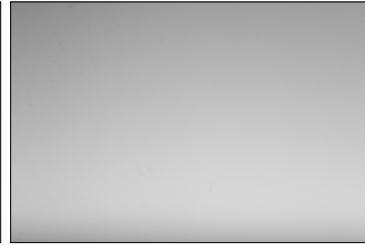
NIKON D3S  
1/400 f/11



NIKON D3S  
1/500 f/11



NIKON D3S  
1/640 f/11



NIKON D3S  
1/800 f/11



NIKON D3S  
1/1000 f/11



NIKON D3S  
1/1250 f/11



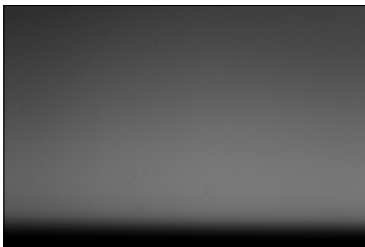
NIKON D3S  
1/1600 f/11



NIKON D3S  
1/2000 f/11



NIKON D3S  
1/2500 f/11



NIKON D3S  
1/3200 f/11



NIKON D3S  
1/4000 f/11



NIKON D3S  
1/5000 f/11



NIKON D3S  
1/6400 f/11



NIKON D3S  
1/8000 f/11

Nikon D3s, White Lightning X3200, -1 (1/16 Power)  
HyperSync Only Enabled  
Optimize HyperSync Automation For: Highest Energy  
PDF Revision 1.1



NIKON D3S  
1/200 f/11



NIKON D3S  
1/250 f/11



NIKON D3S  
1/320 f/11



NIKON D3S  
1/400 f/11



NIKON D3S  
1/500 f/11



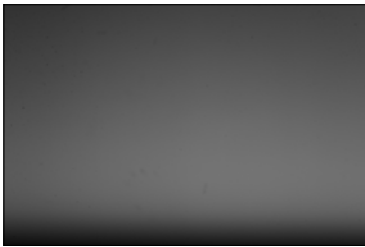
NIKON D3S  
1/640 f/11



NIKON D3S  
1/800 f/11



NIKON D3S  
1/1000 f/11



NIKON D3S  
1/1250 f/11



NIKON D3S  
1/1600 f/11



NIKON D3S  
1/2000 f/11



NIKON D3S  
1/2500 f/11



NIKON D3S  
1/3200 f/11



NIKON D3S  
1/4000 f/11



NIKON D3S  
1/5000 f/11



NIKON D3S  
1/6400 f/11



NIKON D3S  
1/8000 f/11

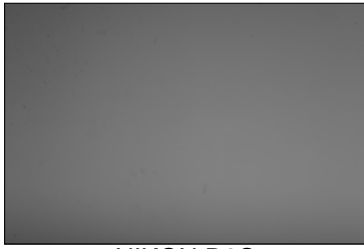
Nikon D3s, White Lightning X3200, -2 (1/32 Power)  
HyperSync Only Enabled  
Optimize HyperSync Automation For: Highest Energy  
PDF Revision 1.1



NIKON D3S  
1/200 f/11



NIKON D3S  
1/250 f/11



NIKON D3S  
1/320 f/11



NIKON D3S  
1/400 f/11



NIKON D3S  
1/500 f/11



NIKON D3S  
1/640 f/11



NIKON D3S  
1/800 f/11



NIKON D3S  
1/1000 f/11



NIKON D3S  
1/1250 f/11



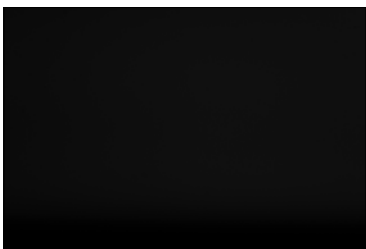
NIKON D3S  
1/1600 f/11



NIKON D3S  
1/2000 f/11



NIKON D3S  
1/2500 f/11



NIKON D3S  
1/3200 f/11



NIKON D3S  
1/4000 f/11



NIKON D3S  
1/5000 f/11



NIKON D3S  
1/6400 f/11



NIKON D3S  
1/8000 f/11

Nikon D3s, White Lightning X3200, -3 (1/64 Power)  
HyperSync Only Enabled  
Optimize HyperSync Automation For: Highest Energy  
PDF Revision 1.1