

HyperSync® Results

Nikon D3s + Elinchrom Ranger RX S-Head

HyperSync Only Enabled

Reduced Clipping

IMAGES BEGIN ON THE NEXT PAGE!

On the following pages you will find images generated using HyperSync® with the Nikon D3s and the Elinchrom Ranger RX with S-Head. To achieve similar results, use the settings detailed below.

Test Conditions: These images were captured indoors, with the camera and flash positioned 6 ft (2 m) from a white wall. A standard reflector was used, but the light was otherwise unmodified. Your results may differ depending upon the position of your lights and ambient conditions.

Transmitter Settings: These images were generated using FlexTT5 Version 3.400 – results may change with future firmware releases.

1. Use a Nikon MiniTT1 or FlexTT5 updated to the latest firmware.
2. Enable “HyperSync Only” under the “HyperSync/HSS” tab.
3. All other transmitter settings may be left at their defaults.

Receiver Settings: These images were generated using PowerST4 Version 5.400 – results may change with future firmware releases.

1. Use a PowerST4 receiver updated to the latest firmware.
2. Set the “Optimize HyperSync Automation For:” control to “Reduced Clipping” under the “HyperSync” tab.
3. Set the “Ranger RX Head Selection” control to “S-Head” under the “Misc” tab.
4. All other receiver settings may be left at their defaults.

Camera Settings: The images in this document were captured using ISO 200 and f/11, at all camera shutter speeds. All other camera settings were factory defaults. Your results may differ depending on your camera settings and exposure.



NIKON D3S
1/200 f/11



NIKON D3S
1/250 f/11



NIKON D3S
1/320 f/11



NIKON D3S
1/400 f/11



NIKON D3S
1/500 f/11



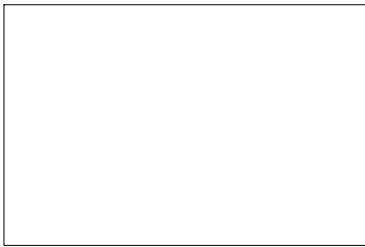
NIKON D3S
1/640 f/11



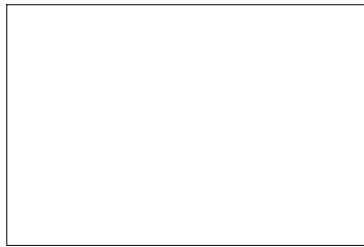
NIKON D3S
1/800 f/11



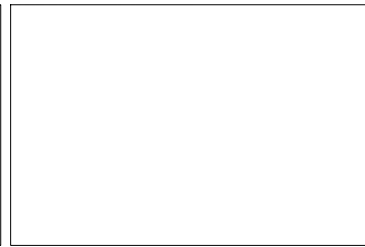
NIKON D3S
1/1000 f/11



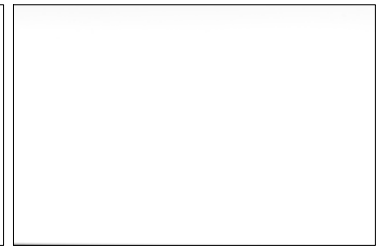
NIKON D3S
1/1250 f/11



NIKON D3S
1/1600 f/11



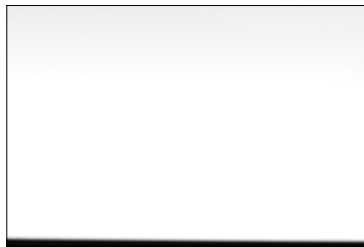
NIKON D3S
1/2000 f/11



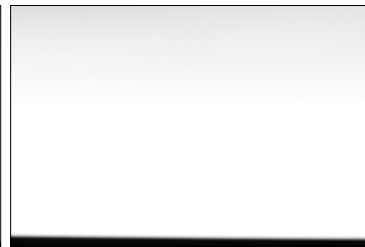
NIKON D3S
1/2500 f/11



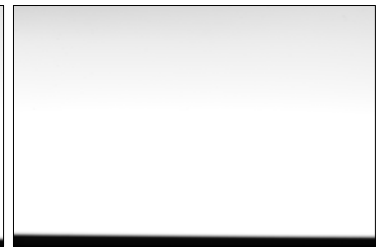
NIKON D3S
1/3200 f/11



NIKON D3S
1/4000 f/11



NIKON D3S
1/5000 f/11



NIKON D3S
1/6400 f/11



NIKON D3S
1/8000 f/11

Nikon D3s, Ranger RX, S Head, +3 (Full Power)
HyperSync Only Enabled
Optimize HyperSync Automation For: Reduced Clipping
PDF Revision 1.1



NIKON D3S
1/200 f/11



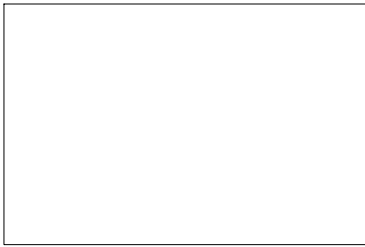
NIKON D3S
1/250 f/11



NIKON D3S
1/320 f/11



NIKON D3S
1/400 f/11



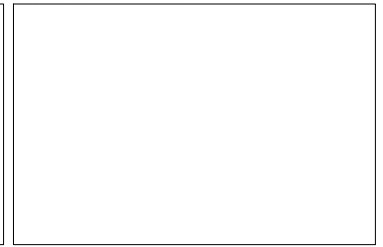
NIKON D3S
1/500 f/11



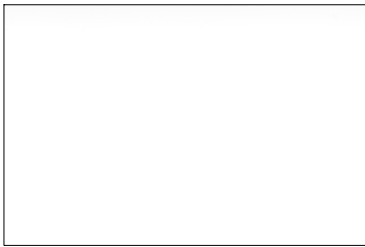
NIKON D3S
1/640 f/11



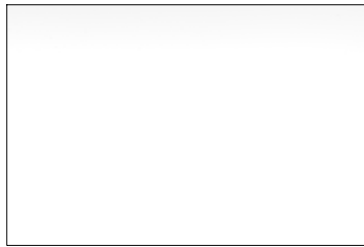
NIKON D3S
1/800 f/11



NIKON D3S
1/1000 f/11



NIKON D3S
1/1250 f/11



NIKON D3S
1/1600 f/11



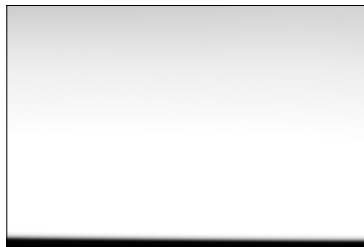
NIKON D3S
1/2000 f/11



NIKON D3S
1/2500 f/11



NIKON D3S
1/3200 f/11



NIKON D3S
1/4000 f/11



NIKON D3S
1/5000 f/11



NIKON D3S
1/6400 f/11



NIKON D3S
1/8000 f/11

Nikon D3s, Ranger RX, S Head, +2 (1/2 Power)
HyperSync Only Enabled
Optimize HyperSync Automation For: Reduced Clipping
PDF Revision 1.1



NIKON D3S
1/200 f/11



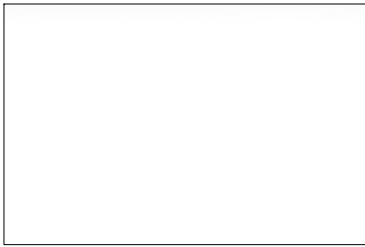
NIKON D3S
1/250 f/11



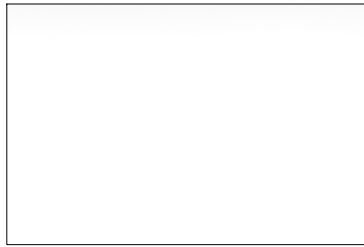
NIKON D3S
1/320 f/11



NIKON D3S
1/400 f/11



NIKON D3S
1/500 f/11



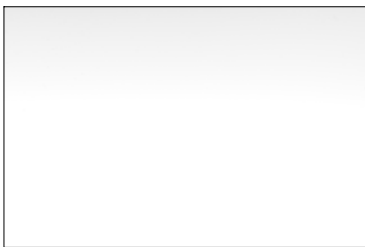
NIKON D3S
1/640 f/11



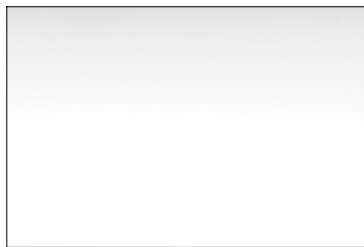
NIKON D3S
1/800 f/11



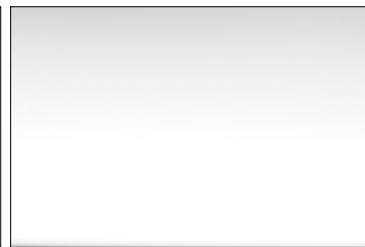
NIKON D3S
1/1000 f/11



NIKON D3S
1/1250 f/11



NIKON D3S
1/1600 f/11



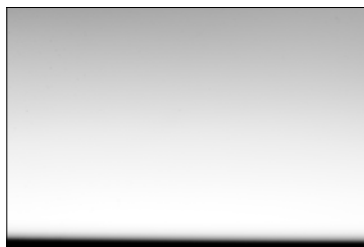
NIKON D3S
1/2000 f/11



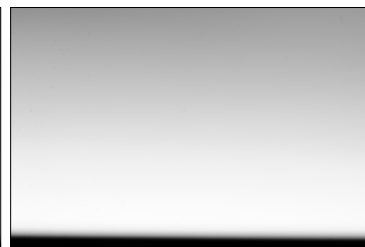
NIKON D3S
1/2500 f/11



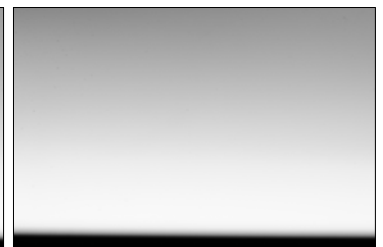
NIKON D3S
1/3200 f/11



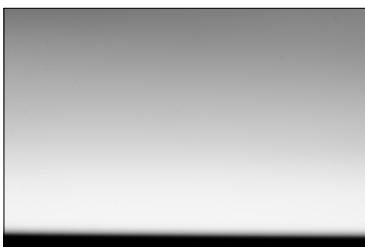
NIKON D3S
1/4000 f/11



NIKON D3S
1/5000 f/11



NIKON D3S
1/6400 f/11



NIKON D3S
1/8000 f/11

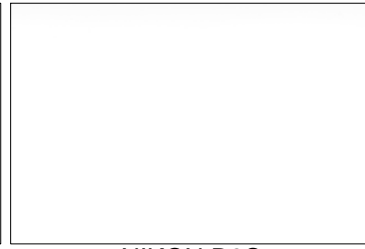
Nikon D3s, Ranger RX, S Head, +1 (1/4 Power)
HyperSync Only Enabled
Optimize HyperSync Automation For: Reduced Clipping
PDF Revision 1.1



NIKON D3S
1/200 f/11



NIKON D3S
1/250 f/11



NIKON D3S
1/320 f/11



NIKON D3S
1/400 f/11



NIKON D3S
1/500 f/11



NIKON D3S
1/640 f/11



NIKON D3S
1/800 f/11



NIKON D3S
1/1000 f/11



NIKON D3S
1/1250 f/11



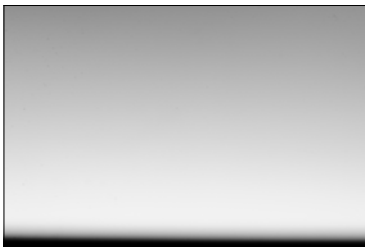
NIKON D3S
1/1600 f/11



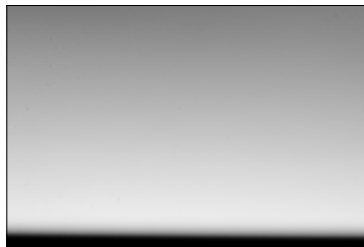
NIKON D3S
1/2000 f/11



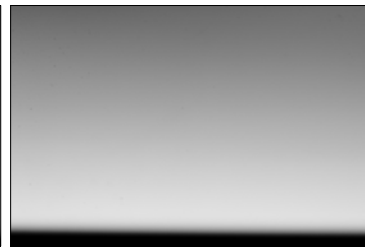
NIKON D3S
1/2500 f/11



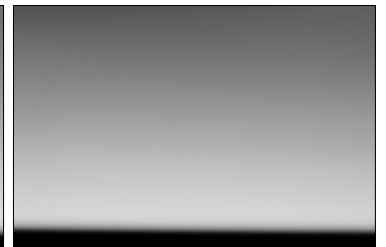
NIKON D3S
1/3200 f/11



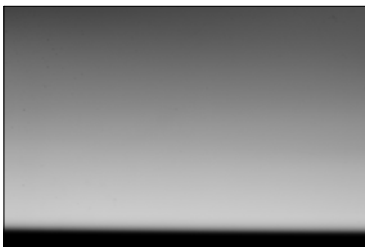
NIKON D3S
1/4000 f/11



NIKON D3S
1/5000 f/11

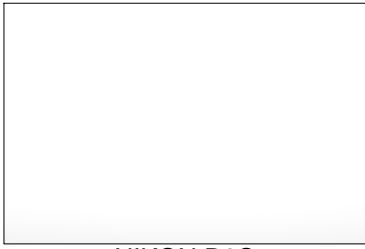


NIKON D3S
1/6400 f/11



NIKON D3S
1/8000 f/11

Nikon D3s, Ranger RX, S Head, +0 (1/8 Power)
HyperSync Only Enabled
Optimize HyperSync Automation For: Reduced Clipping
PDF Revision 1.1



NIKON D3S
1/200 f/11



NIKON D3S
1/250 f/11



NIKON D3S
1/320 f/11



NIKON D3S
1/400 f/11



NIKON D3S
1/500 f/11



NIKON D3S
1/640 f/11



NIKON D3S
1/800 f/11



NIKON D3S
1/1000 f/11



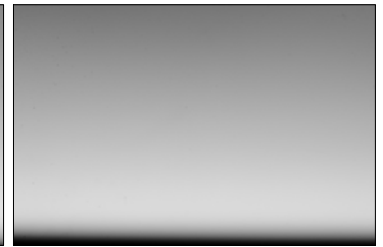
NIKON D3S
1/1250 f/11



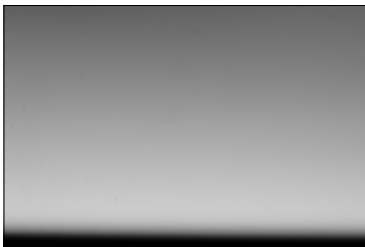
NIKON D3S
1/1600 f/11



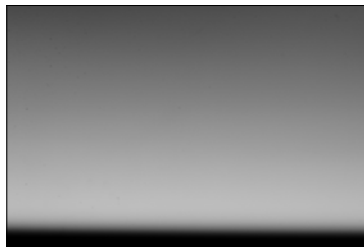
NIKON D3S
1/2000 f/11



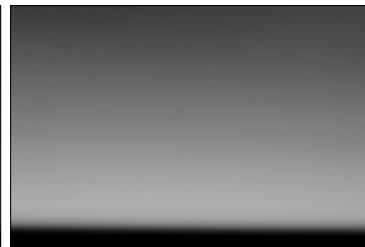
NIKON D3S
1/2500 f/11



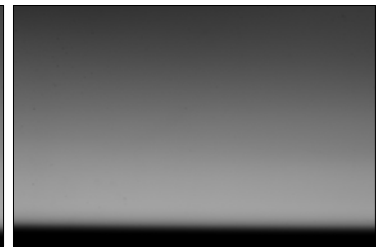
NIKON D3S
1/3200 f/11



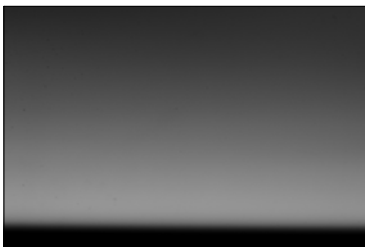
NIKON D3S
1/4000 f/11



NIKON D3S
1/5000 f/11



NIKON D3S
1/6400 f/11



NIKON D3S
1/8000 f/11

Nikon D3s, Ranger RX, S Head, -1 (1/16 Power)
HyperSync Only Enabled
Optimize HyperSync Automation For: Reduced Clipping
PDF Revision 1.1



NIKON D3S
1/200 f/11



NIKON D3S
1/250 f/11



NIKON D3S
1/320 f/11



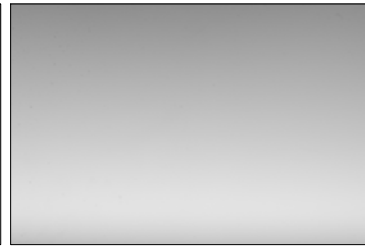
NIKON D3S
1/400 f/11



NIKON D3S
1/500 f/11



NIKON D3S
1/640 f/11



NIKON D3S
1/800 f/11



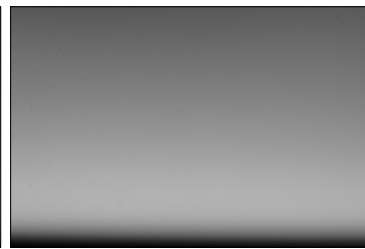
NIKON D3S
1/1000 f/11



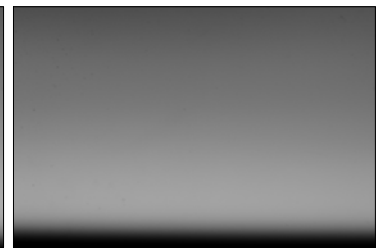
NIKON D3S
1/1250 f/11



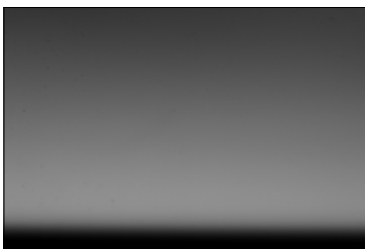
NIKON D3S
1/1600 f/11



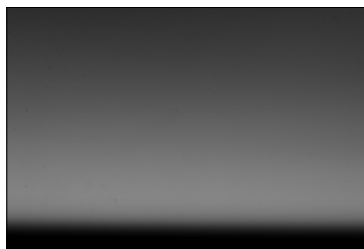
NIKON D3S
1/2000 f/11



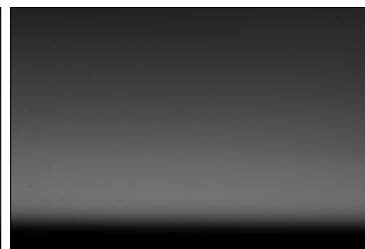
NIKON D3S
1/2500 f/11



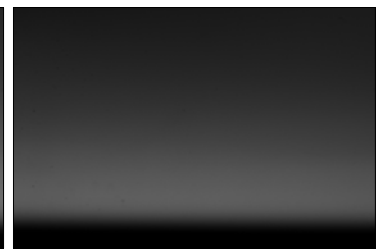
NIKON D3S
1/3200 f/11



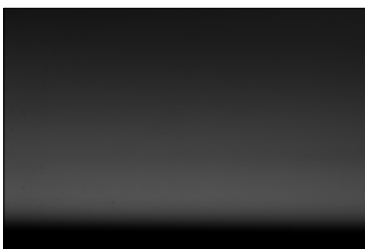
NIKON D3S
1/4000 f/11



NIKON D3S
1/5000 f/11



NIKON D3S
1/6400 f/11



NIKON D3S
1/8000 f/11

Nikon D3s, Ranger RX, S Head, -2 (1/32 Power)
HyperSync Only Enabled
Optimize HyperSync Automation For: Reduced Clipping
PDF Revision 1.1



NIKON D3S
1/200 f/11



NIKON D3S
1/250 f/11



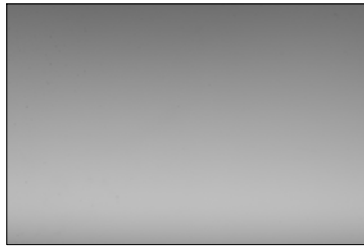
NIKON D3S
1/320 f/11



NIKON D3S
1/400 f/11



NIKON D3S
1/500 f/11



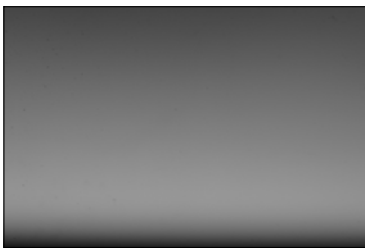
NIKON D3S
1/640 f/11



NIKON D3S
1/800 f/11



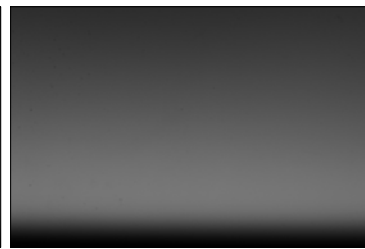
NIKON D3S
1/1000 f/11



NIKON D3S
1/1250 f/11



NIKON D3S
1/1600 f/11



NIKON D3S
1/2000 f/11



NIKON D3S
1/2500 f/11



NIKON D3S
1/3200 f/11



NIKON D3S
1/4000 f/11



NIKON D3S
1/5000 f/11



NIKON D3S
1/6400 f/11



NIKON D3S
1/8000 f/11

Nikon D3s, Ranger RX, S Head, -3 (1/64 Power)
HyperSync Only Enabled
Optimize HyperSync Automation For: Reduced Clipping
PDF Revision 1.1