

HyperSync® Results

Nikon D3s + White Lightning X3200

HyperSync Only Disabled

Reduced Clipping

IMAGES BEGIN ON THE NEXT PAGE!

On the following pages you will find images generated using [HyperSync®](#) with the [Nikon D3s](#) and the [White Lightning X3200](#). To achieve similar results, use the settings detailed below.

Test Conditions: These images were captured indoors, with the camera and flash positioned 6 ft (2 m) from a white wall. A standard reflector was used, but the light was otherwise unmodified. Your results may differ depending upon the position of your lights and ambient conditions.

Transmitter Settings: These images were generated using FlexTT5 Version 3.400 – results may change with future firmware releases.

1. Use a [Nikon MiniTT1](#) or [FlexTT5](#) updated to the latest firmware.
2. Disable “[HyperSync Only](#)” under the “[HyperSync/HSS](#)” tab (this is the default setting).
3. All other transmitter settings may be left at their defaults.

Receiver Settings: These images were generated using FlexTT5 Version 3.400 and an [AC9 AlienBees Adapter](#) – results may change with future firmware releases.

1. Use a Nikon FlexTT5 updated to the latest firmware and a Nikon AC9 AlienBees Adapter.
2. Set the “[AC9 Flash](#)” drop-down to “X3200” under the “[HyperSync/HSS](#)” tab.
3. Set the “[Optimize HyperSync Automation For:](#)” control to “[Reduced Clipping](#)” under the “[HyperSync/HSS](#)” tab.
4. All other receiver settings may be left at their defaults.

Camera Settings: The images in this document were captured using ISO 200 and f/11, at all camera shutter speeds. All other camera settings were factory defaults. Your results may differ depending on your camera settings and exposure.

Visit the [HyperSync](#) page on the [PocketWizard Wiki](#) for more information!



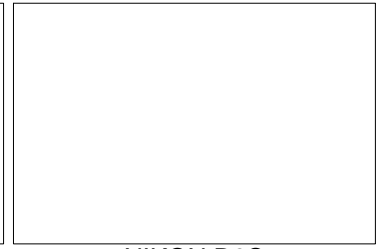
NIKON D3S
1/200 f/11



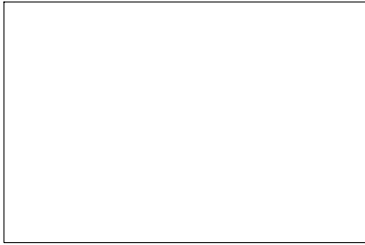
NIKON D3S
1/250 f/11



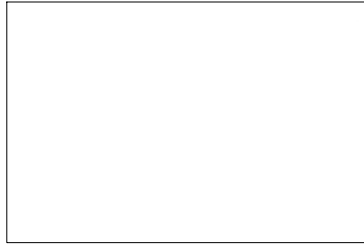
NIKON D3S
1/320 f/11



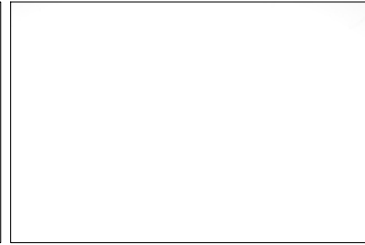
NIKON D3S
1/400 f/11



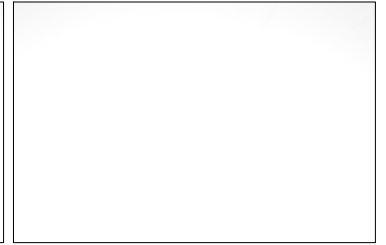
NIKON D3S
1/500 f/11



NIKON D3S
1/640 f/11



NIKON D3S
1/800 f/11



NIKON D3S
1/1000 f/11



NIKON D3S
1/1250 f/11



NIKON D3S
1/1600 f/11



NIKON D3S
1/2000 f/11



NIKON D3S
1/2500 f/11



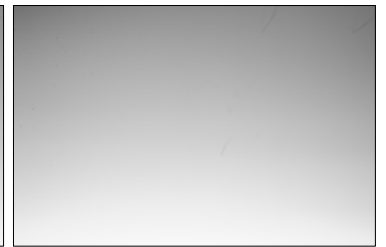
NIKON D3S
1/3200 f/11



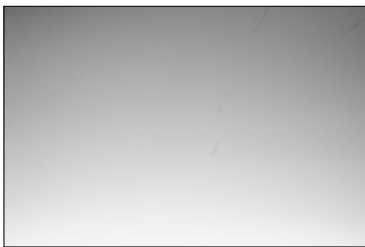
NIKON D3S
1/4000 f/11



NIKON D3S
1/5000 f/11

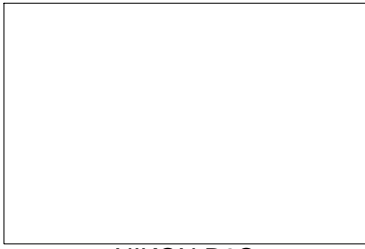


NIKON D3S
1/6400 f/11



NIKON D3S
1/8000 f/11

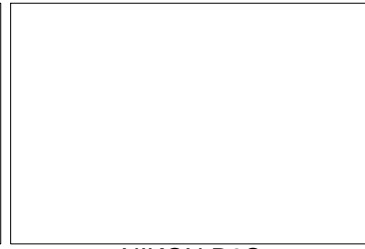
Nikon D3s, White Lightning X3200, +3 (Full Power)
HyperSync Only Disabled
Optimize HyperSync Automation For: Reduced Clipping
PDF Revision 1.1



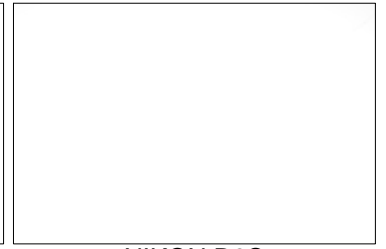
NIKON D3S
1/200 f/11



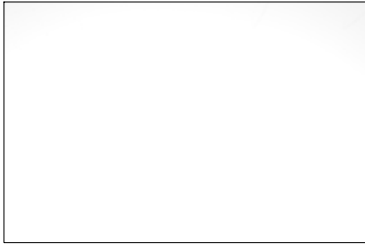
NIKON D3S
1/250 f/11



NIKON D3S
1/320 f/11



NIKON D3S
1/400 f/11



NIKON D3S
1/500 f/11



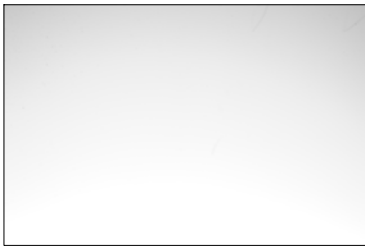
NIKON D3S
1/640 f/11



NIKON D3S
1/800 f/11



NIKON D3S
1/1000 f/11



NIKON D3S
1/1250 f/11



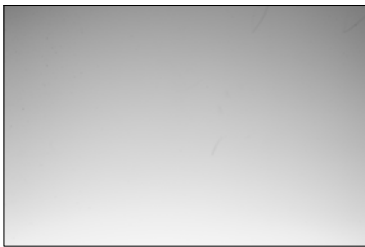
NIKON D3S
1/1600 f/11



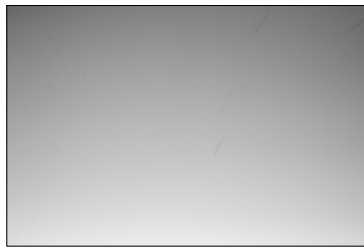
NIKON D3S
1/2000 f/11



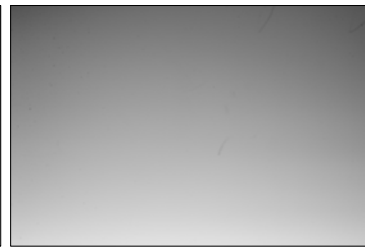
NIKON D3S
1/2500 f/11



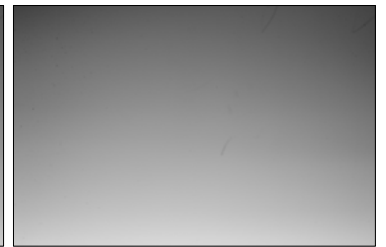
NIKON D3S
1/3200 f/11



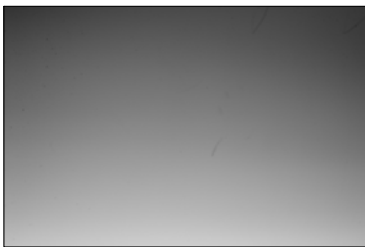
NIKON D3S
1/4000 f/11



NIKON D3S
1/5000 f/11

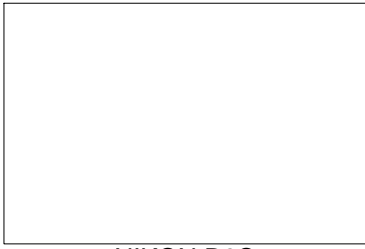


NIKON D3S
1/6400 f/11



NIKON D3S
1/8000 f/11

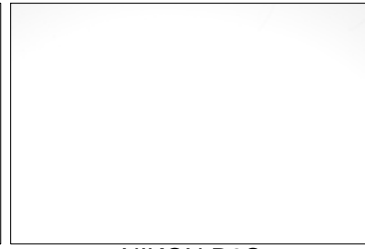
Nikon D3s, White Lightning X3200, +2 (1/2 Power)
HyperSync Only Disabled
Optimize HyperSync Automation For: Reduced Clipping
PDF Revision 1.1



NIKON D3S
1/200 f/11



NIKON D3S
1/250 f/11



NIKON D3S
1/320 f/11



NIKON D3S
1/400 f/11



NIKON D3S
1/500 f/11



NIKON D3S
1/640 f/11



NIKON D3S
1/800 f/11



NIKON D3S
1/1000 f/11



NIKON D3S
1/1250 f/11



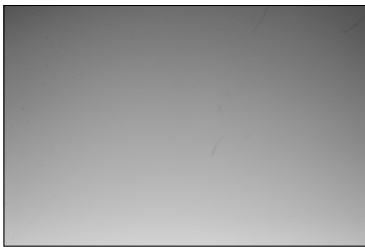
NIKON D3S
1/1600 f/11



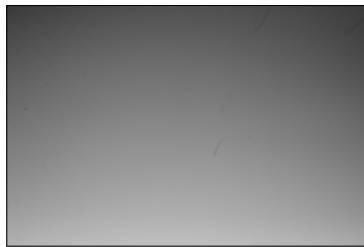
NIKON D3S
1/2000 f/11



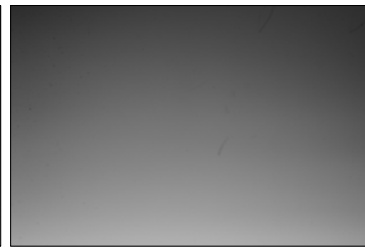
NIKON D3S
1/2500 f/11



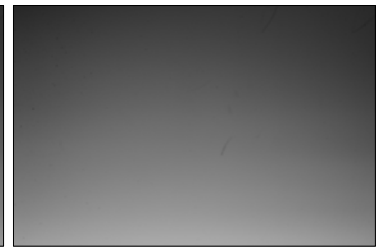
NIKON D3S
1/3200 f/11



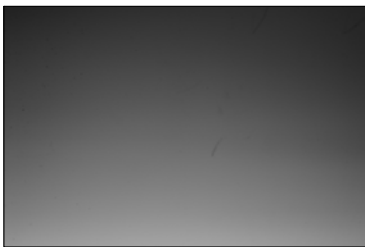
NIKON D3S
1/4000 f/11



NIKON D3S
1/5000 f/11



NIKON D3S
1/6400 f/11



NIKON D3S
1/8000 f/11

Nikon D3s, White Lightning X3200, +1 (1/4 Power)
HyperSync Only Disabled
Optimize HyperSync Automation For: Reduced Clipping
PDF Revision 1.1



NIKON D3S
1/200 f/11



NIKON D3S
1/250 f/11



NIKON D3S
1/320 f/11



NIKON D3S
1/400 f/11



NIKON D3S
1/500 f/11



NIKON D3S
1/640 f/11



NIKON D3S
1/800 f/11



NIKON D3S
1/1000 f/11



NIKON D3S
1/1250 f/11



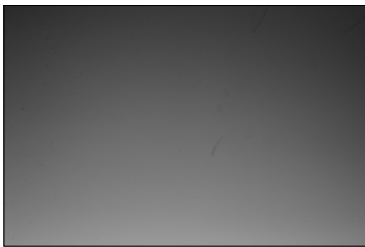
NIKON D3S
1/1600 f/11



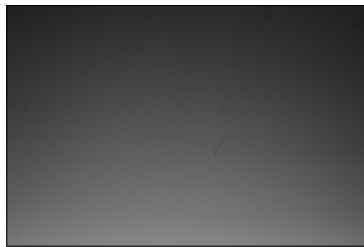
NIKON D3S
1/2000 f/11



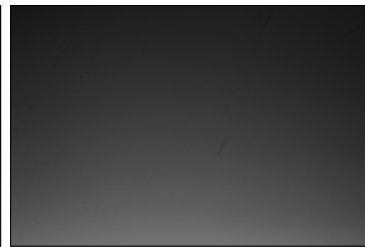
NIKON D3S
1/2500 f/11



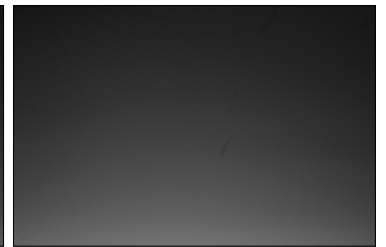
NIKON D3S
1/3200 f/11



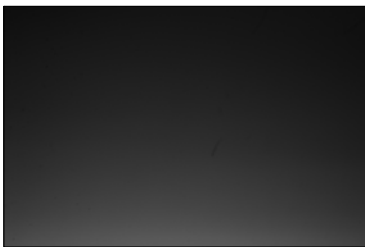
NIKON D3S
1/4000 f/11



NIKON D3S
1/5000 f/11



NIKON D3S
1/6400 f/11



NIKON D3S
1/8000 f/11

Nikon D3s, White Lightning X3200, +0 (1/8 Power)
HyperSync Only Disabled
Optimize HyperSync Automation For: Reduced Clipping
PDF Revision 1.1



NIKON D3S
1/200 f/11



NIKON D3S
1/250 f/11



NIKON D3S
1/320 f/11



NIKON D3S
1/400 f/11



NIKON D3S
1/500 f/11



NIKON D3S
1/640 f/11



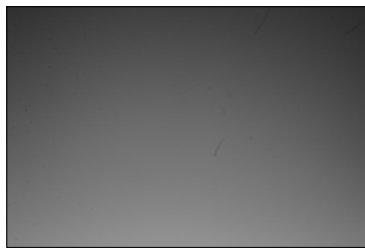
NIKON D3S
1/800 f/11



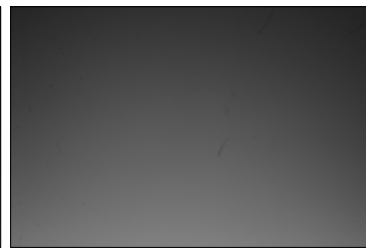
NIKON D3S
1/1000 f/11



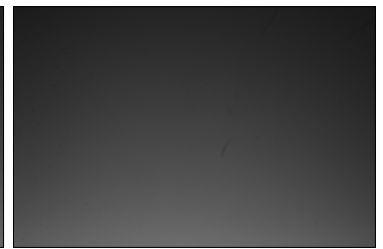
NIKON D3S
1/1250 f/11



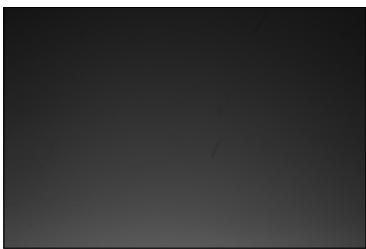
NIKON D3S
1/1600 f/11



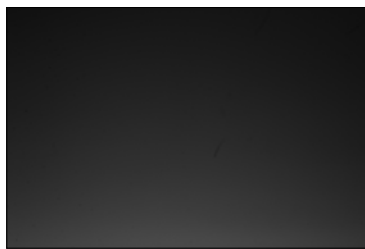
NIKON D3S
1/2000 f/11



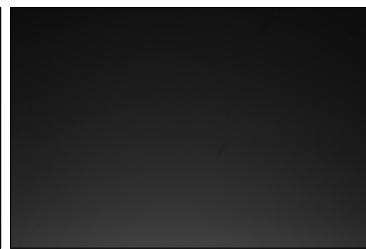
NIKON D3S
1/2500 f/11



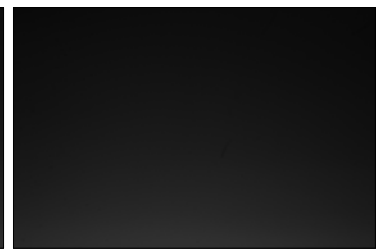
NIKON D3S
1/3200 f/11



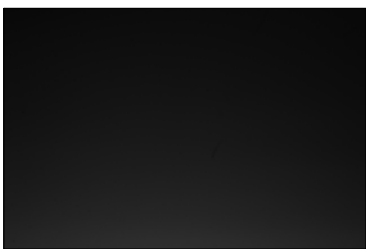
NIKON D3S
1/4000 f/11



NIKON D3S
1/5000 f/11



NIKON D3S
1/6400 f/11



NIKON D3S
1/8000 f/11

Nikon D3s, White Lightning X3200, -1 (1/16 Power)
HyperSync Only Disabled
Optimize HyperSync Automation For: Reduced Clipping
PDF Revision 1.1



NIKON D3S
1/200 f/11



NIKON D3S
1/250 f/11



NIKON D3S
1/320 f/11



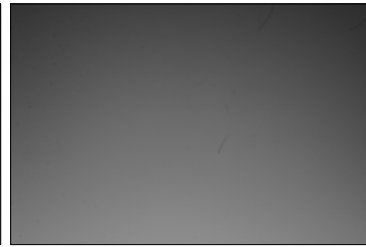
NIKON D3S
1/400 f/11



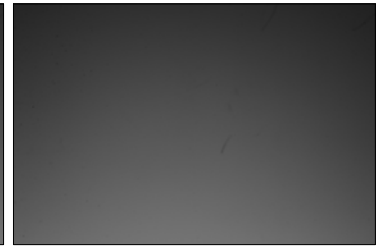
NIKON D3S
1/500 f/11



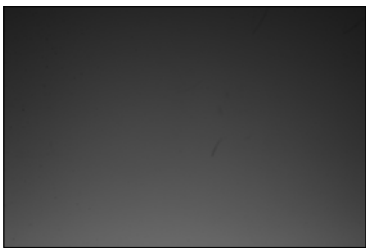
NIKON D3S
1/640 f/11



NIKON D3S
1/800 f/11



NIKON D3S
1/1000 f/11



NIKON D3S
1/1250 f/11



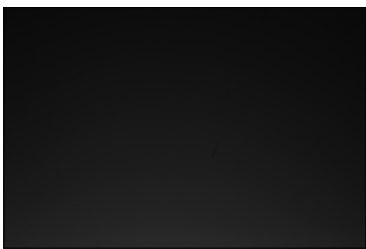
NIKON D3S
1/1600 f/11



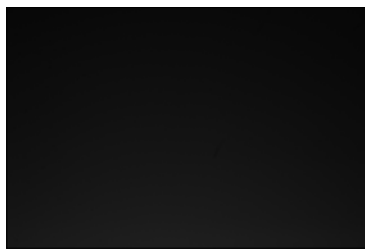
NIKON D3S
1/2000 f/11



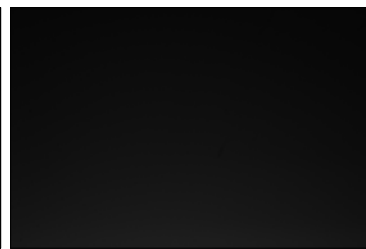
NIKON D3S
1/2500 f/11



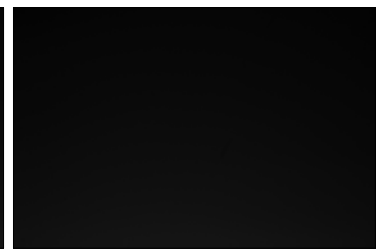
NIKON D3S
1/3200 f/11



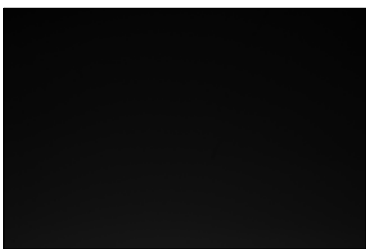
NIKON D3S
1/4000 f/11



NIKON D3S
1/5000 f/11



NIKON D3S
1/6400 f/11

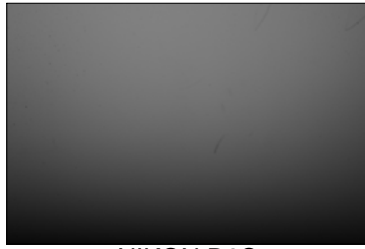


NIKON D3S
1/8000 f/11

Nikon D3s, White Lightning X3200, -2 (1/32 Power)
HyperSync Only Disabled
Optimize HyperSync Automation For: Reduced Clipping
PDF Revision 1.1



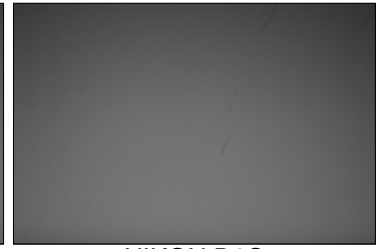
NIKON D3S
1/200 f/11



NIKON D3S
1/250 f/11



NIKON D3S
1/320 f/11



NIKON D3S
1/400 f/11



NIKON D3S
1/500 f/11



NIKON D3S
1/640 f/11



NIKON D3S
1/800 f/11



NIKON D3S
1/1000 f/11



NIKON D3S
1/1250 f/11



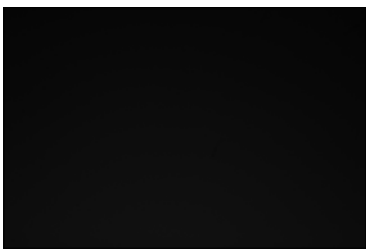
NIKON D3S
1/1600 f/11



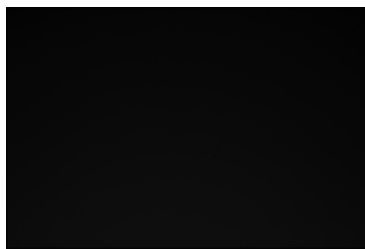
NIKON D3S
1/2000 f/11



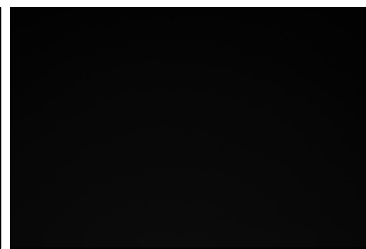
NIKON D3S
1/2500 f/11



NIKON D3S
1/3200 f/11



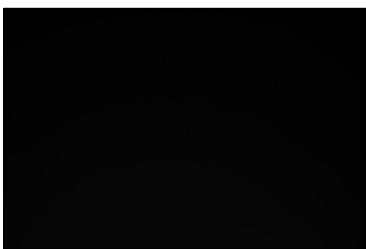
NIKON D3S
1/4000 f/11



NIKON D3S
1/5000 f/11



NIKON D3S
1/6400 f/11



NIKON D3S
1/8000 f/11

Nikon D3s, White Lightning X3200, -3 (1/64 Power)
HyperSync Only Disabled
Optimize HyperSync Automation For: Reduced Clipping
PDF Revision 1.1